

There are many carer options we provide that may suit you:

- Respite care (eg 1 weekend per month)
- Short term care (young people exit after 3-6 months)
- Lead tenant – where you live as a role model/guide, not a parent type role (min 6-12 months)
- Long term care



Ready to take the next step and make a difference to a young person's life?

Email: carer@burdekin.org.au

Phone: 02 8976 1777

Sarah (Inner West/South East/Eastern region enquiries)

Michelle (Northern Region enquiries)



Our youth, their future.

Find us on social media

-  @burdekinassociation
-  @theburdekinassociation
-  @BurdekinAssoc



Our youth, their future.



How can I become a Burdekin Foster Carer?

Live with and care for a young person in Northern Sydney, Inner West, East or South East Sydney.

carer@burdekin.org.au

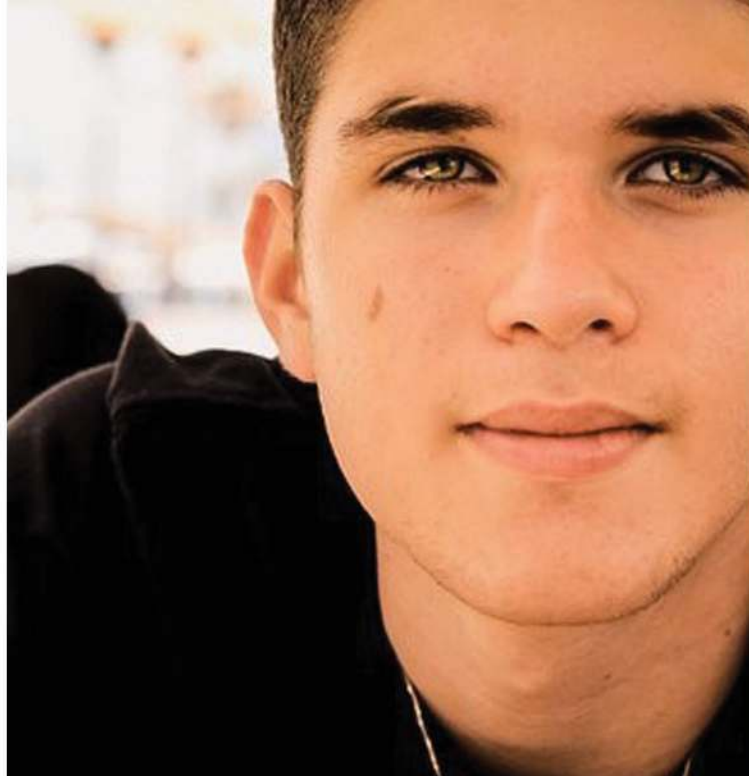
www.burdekin.org.au

02 8976 1777

Burdekin Foster Carers

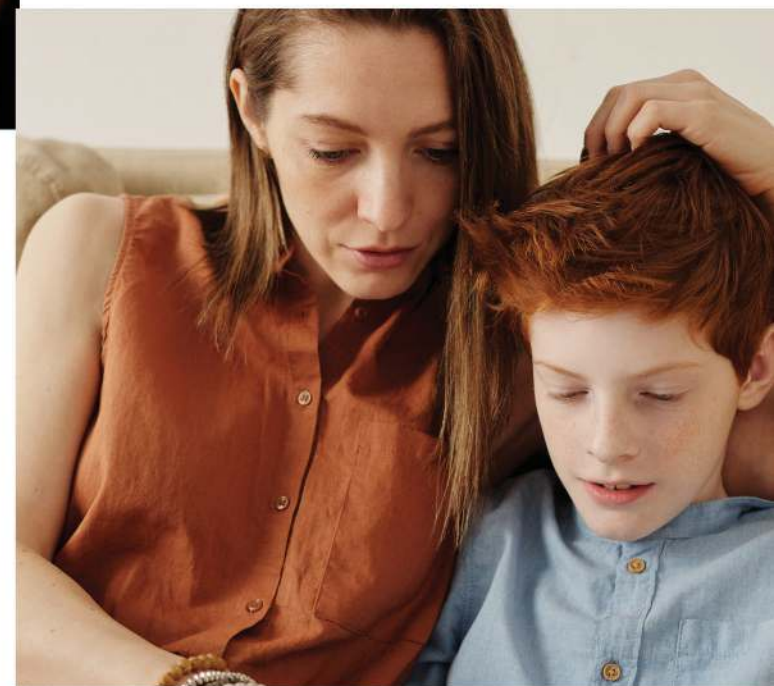
Being a Foster Carer with The Burdekin Association is different from traditional foster care in that Burdekin Foster Carers are part of a support team that work with our young people (aged 9-18 years), enabling them to become more stable and independent.

Burdekin Foster Carers offer a caring relationship where the young person is listened to non-judgementally and is valued for being the unique person that they are.



We provide:

- A home for you and the young person, rent free.
- Staff support so you can continue to work and have a work / life balance.
- A carer allowance to assist with the young person's expenses.
- Ongoing training and support.
- Access to 24 respite days per year



What skills do I need to become a Carer with Burdekin?

<i>Resilient</i>	<i>Willing to learn</i>
<i>Empathetic</i>	<i>Flexible</i>
<i>Honest</i>	<i>Good listener</i>
<i>Reliable</i>	<i>Non judgemental</i>
<i>Committed</i>	<i>Nurturing</i>
<i>Patient</i>	<i>Sense of humour</i>

Phone: 02 8976 1777

Sarah: Inner West, South East, Eastern region enquiries

Michelle: Northern region enquiries

Email: carer@burdekin.org.au